

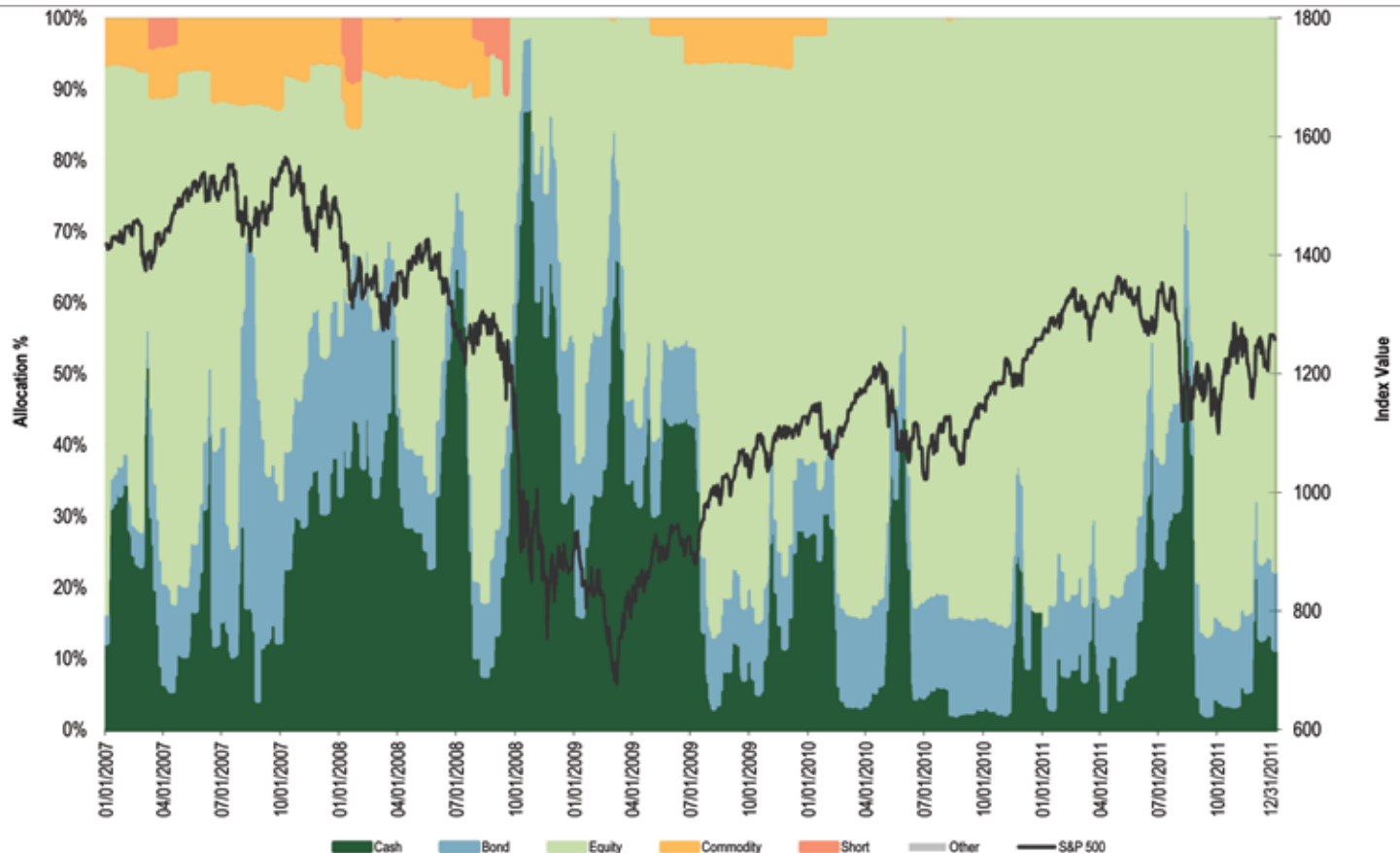


Dividend Allocations

WBI Dividend Income Composite

Daily Allocation by Asset Type

January 1, 2007 to December 31, 2011

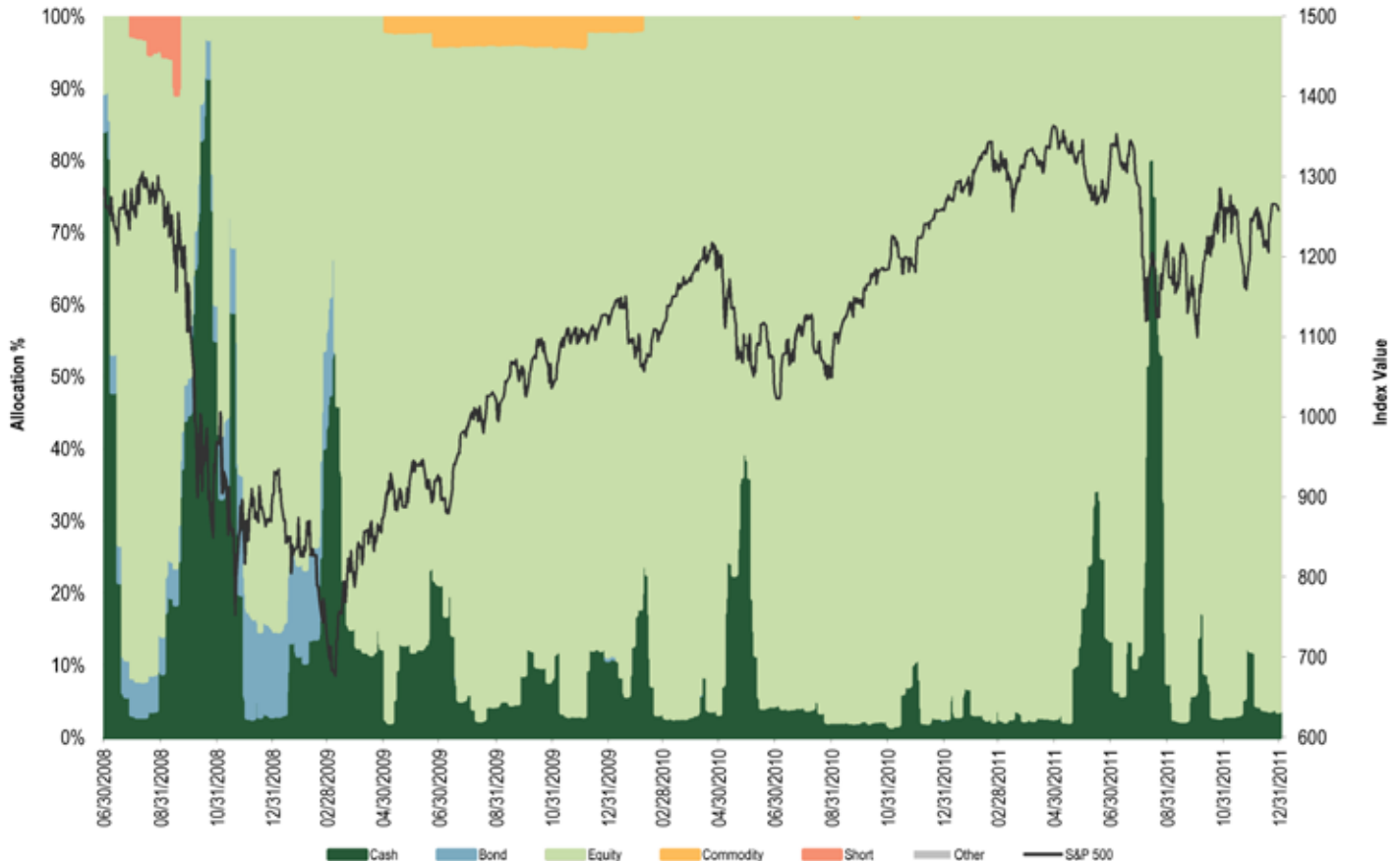


This allocation chart represents the consolidated holdings of all managed client accounts included in the composite for the indicated portfolio on each date shown. The length of each color segment of a bar on the chart represents the percentage of the portfolio allocated to its corresponding asset type on that day. All the color segments (asset types) add up to the 100% allocation of the portfolio each day. The chart illustrates dynamic and responsive nature of the WBI portfolio process by showing the changing allocation mix over time as market conditions change. Market changes are represented by the overlay of a common index. Index values have been retrieved from Thomson Baseline. The index used is for reference only, and may not be indicative of the composition or performance characteristics of the portfolio shown. Additional information regarding the portfolio can be found in the portfolio's Fact Sheet which is available upon request. Investors should consult with their financial professional to determine the WBI portfolio that is most suitable for their individual needs.

WBI Dividend Growth Composite

Daily Allocation by Asset Type

June 30, 2008 to December 31, 2011



This allocation chart represents the consolidated holdings of all managed client accounts included in the composite for the indicated portfolio on each date shown. The length of each color segment of a bar on the chart represents the percentage of the portfolio allocated to its corresponding asset type on that day. All the color segments (asset types) add up to the 100% allocation of the portfolio each day. The chart illustrates dynamic and responsive nature of the WBI portfolio process by showing the changing allocation mix over time as market conditions change. Market changes are represented by the overlay of a common index. Index values have been retrieved from Thomson Baseline. The index used is for reference only, and may not be indicative of the composition or performance characteristics of the portfolio shown. Additional information regarding the portfolio can be found in the portfolio's Fact Sheet which is available upon request. Investors should consult with their financial professional to determine the WBI portfolio that is most suitable for their individual needs.



IMPORTANT INFORMATION

The charts and graphs contained in this brochure should not serve as the sole determining factor for making investment decisions. Accordingly, no client or prospective client should assume that the portfolios mentioned in this presentation or that of any corresponding materials serve as the receipt of, or a substitute for, personalized advice from WBI, or form of any other investment professional. However, to the extent that you have any questions regarding the applicability of any specific issue discussed in this brochure to your individual situation, you are encouraged to consult with you investment professional.

Although a company may pay a dividend, prices of equity securities – including those that pay dividends – fluctuate. Investing on the basis of dividends alone may cause an investor to buy or sell certain securities when circumstances may or may not be favorable.

Different types of investments involve varying degrees of risk, and there can be no assurance that the future performance of any specific investment, investment strategy, or product made reference to directly or indirectly in this document, will be profitable, equal any corresponding indicated historical performance level(s), or be suitable for your portfolio. Any investment strategy involves risk, including the possible loss of principal invested.



34 Sycamore Avenue
Suite 1-E
Little Silver, NJ 07739

Office 800.772.5810

Fax 732.842.8049

www.wbiinvestments.com