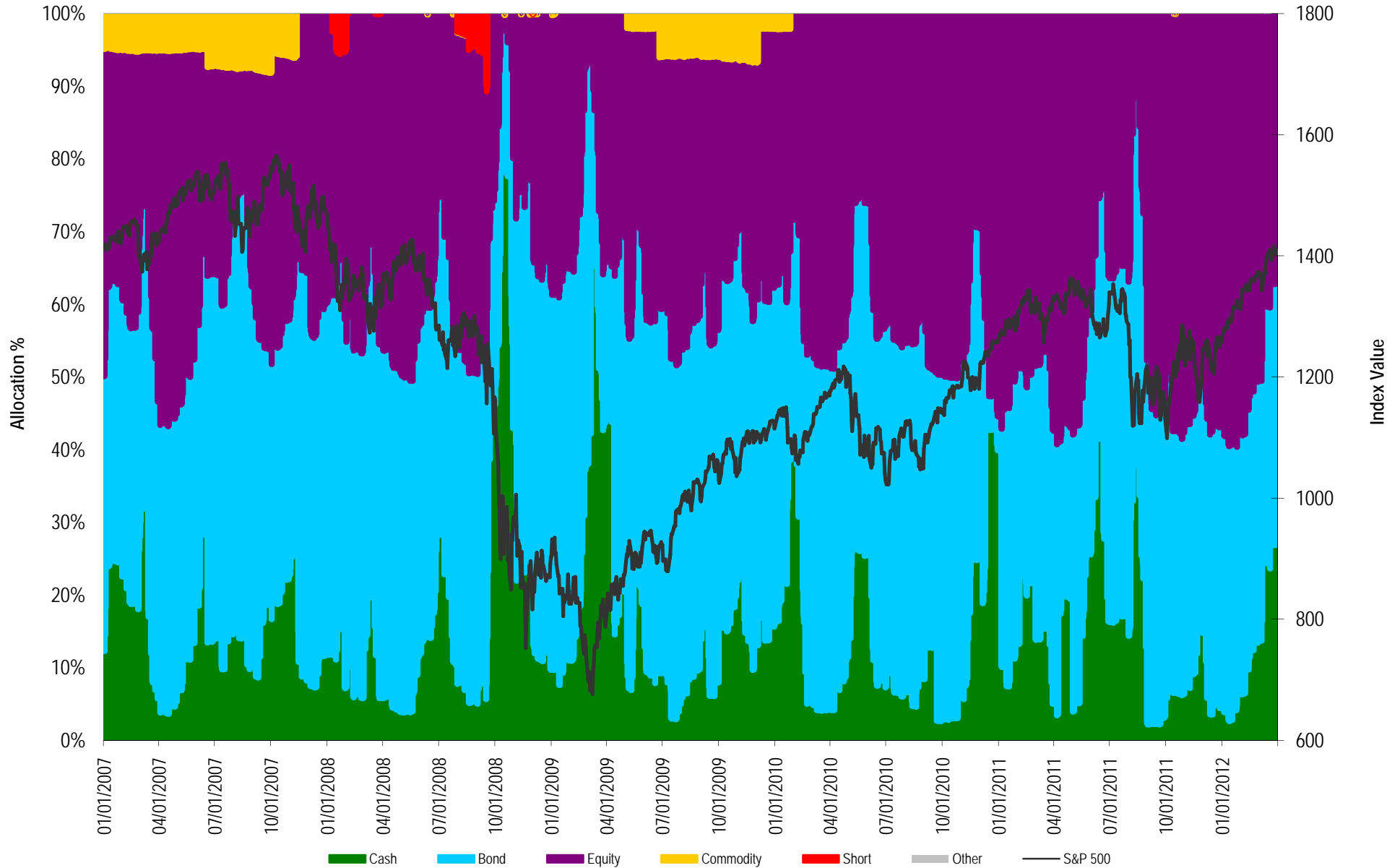


Balanced Composite

Daily Allocation by Asset Type

01/01/2007 to 03/30/2012

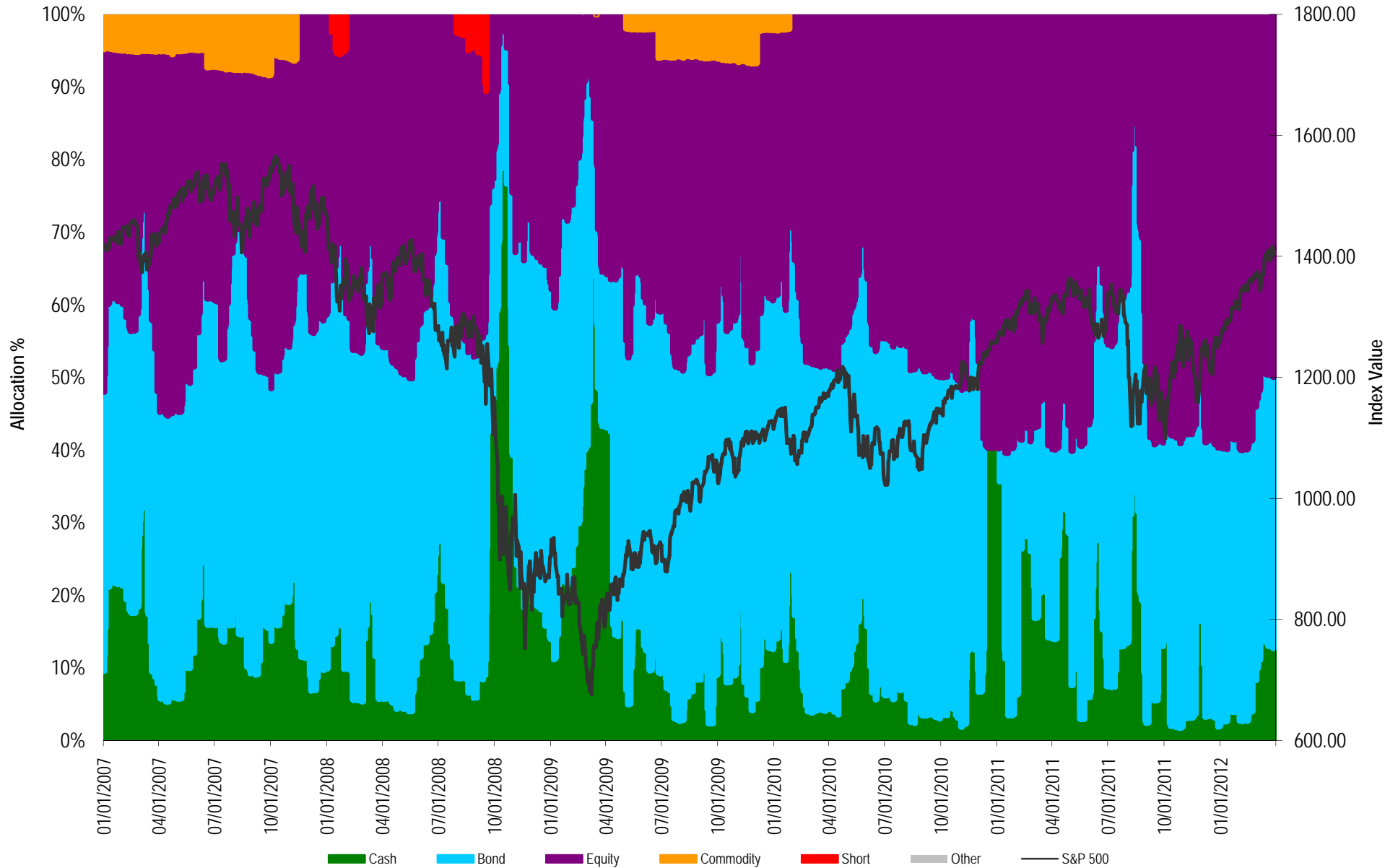


This allocation chart represents the consolidated holdings of all managed client accounts included in the composite for the indicated portfolio on each date shown. The length of each color segment of a bar on the chart represents the percentage of the portfolio allocated to its corresponding asset type on that day. All the color segments (asset types) add up to the 100% allocation of the portfolio each day. The chart illustrates dynamic and responsive nature of the WBI portfolio process by showing the changing allocation mix over time as market conditions change. Market changes are represented by the overlay of a common index. Index values have been retrieved from Thomson Baseline. The index used is for reference only, and may not be indicative of the composition or performance characteristics of the portfolio shown. Additional information regarding the portfolio can be found in the portfolio's Fact Sheet which is available upon request. Investors should consult with their financial professional to determine the WBI portfolio that is most suitable for their individual needs.

Balanced Plus Composite

Daily Allocation by Asset Type

01/01/2007 to 03/30/2012

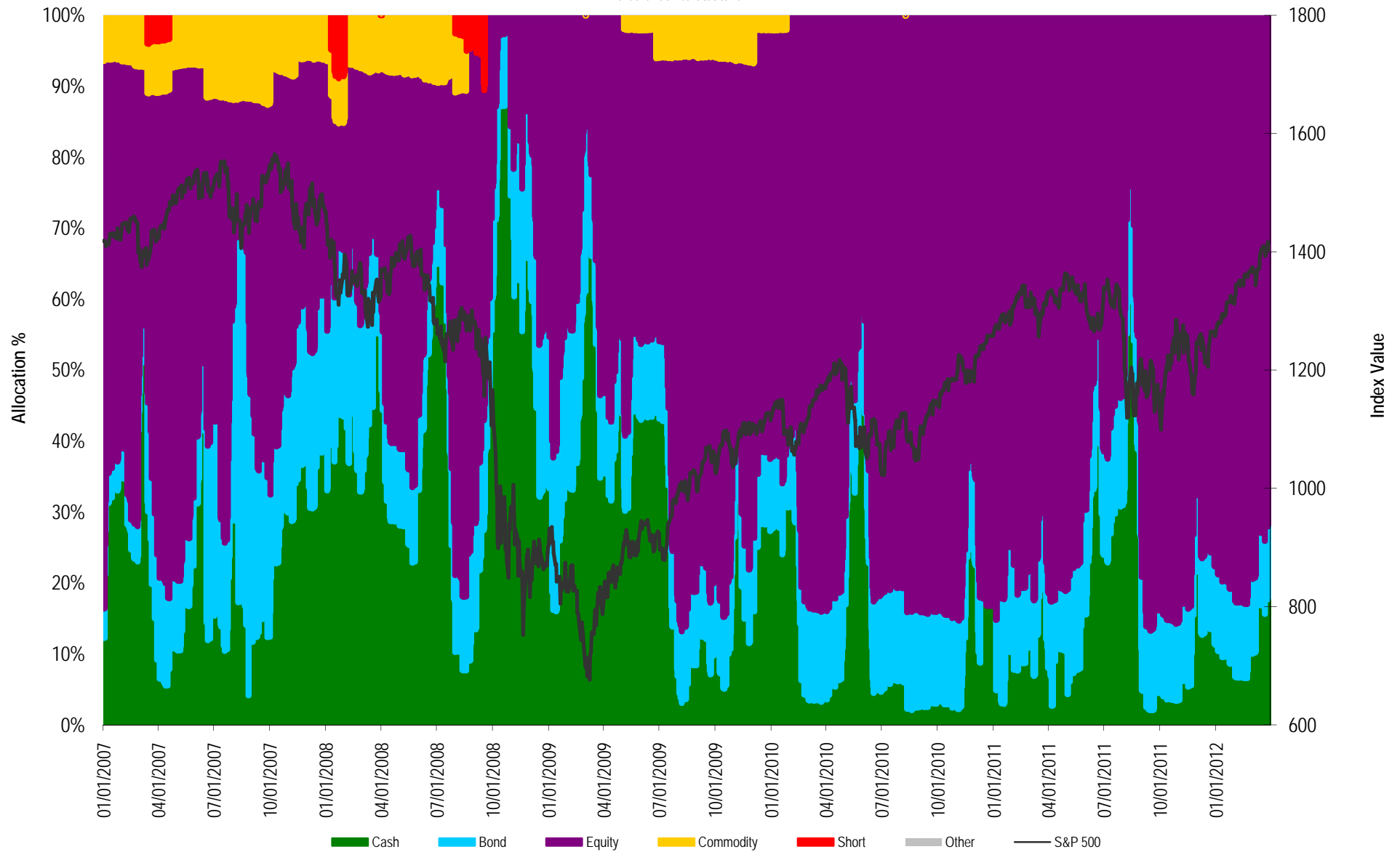


This allocation chart represents the consolidated holdings of all managed client accounts included in the composite for the indicated portfolio on each date shown. The length of each color segment of a bar on the chart represents the percentage of the portfolio allocated to its corresponding asset type on that day. All the color segments (asset types) add up to the 100% allocation of the portfolio each day. The chart illustrates dynamic and responsive nature of the WBI portfolio process by showing the changing allocation mix over time as market conditions change. Market changes are represented by the overlay of a common index. Index values have been retrieved from Thomson Baseline. The index used is for reference only, and may not be indicative of the composition or performance characteristics of the portfolio shown. Additional information regarding the portfolio can be found in the portfolio's Fact Sheet which is available upon request. Investors should consult with their financial professional to determine the WBI portfolio that is most suitable for their individual needs.

Dividend Income Composite

Daily Allocation by Asset Type

01/01/2007 to 03/30/2012

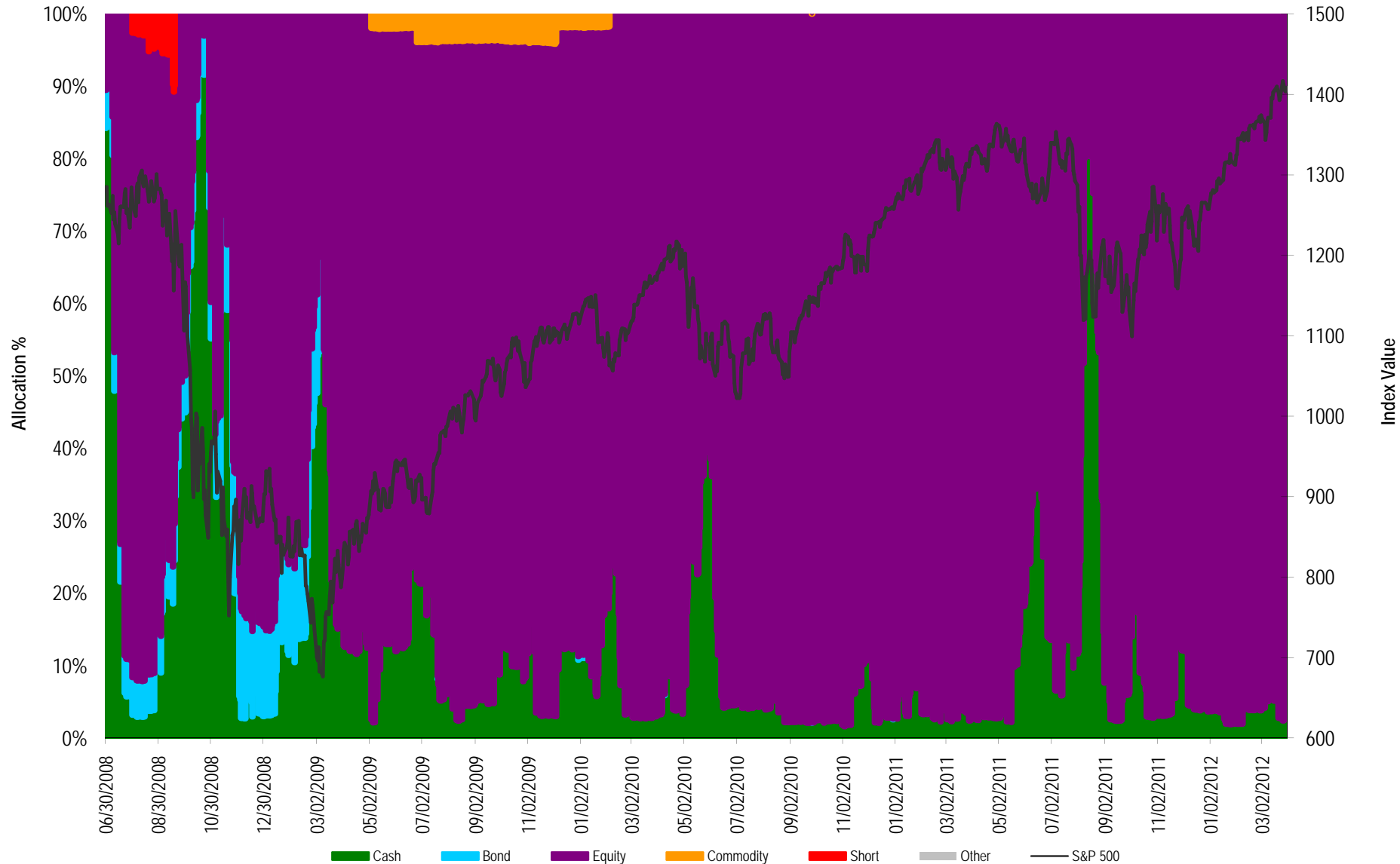


This allocation chart represents the consolidated holdings of all managed client accounts included in the composite for the indicated portfolio on each date shown. The length of each color segment of a bar on the chart represents the percentage of the portfolio allocated to its corresponding asset type on that day. All the color segments (asset types) add up to the 100% allocation of the portfolio each day. The chart illustrates dynamic and responsive nature of the WBI portfolio process by showing the changing allocation mix over time as market conditions change. Market changes are represented by the overlay of a common index. Index values have been retrieved from Thomson Baseline. The index used is for reference only, and may not be indicative of the composition or performance characteristics of the portfolio shown. Additional information regarding the portfolio can be found in the portfolio's Fact Sheet which is available upon request. Investors should consult with their financial professional to determine the WBI portfolio that is most suitable for their individual needs.

Dividend Growth Composite

Daily Allocation by Asset Type

06/30/2008 to 03/30/2012

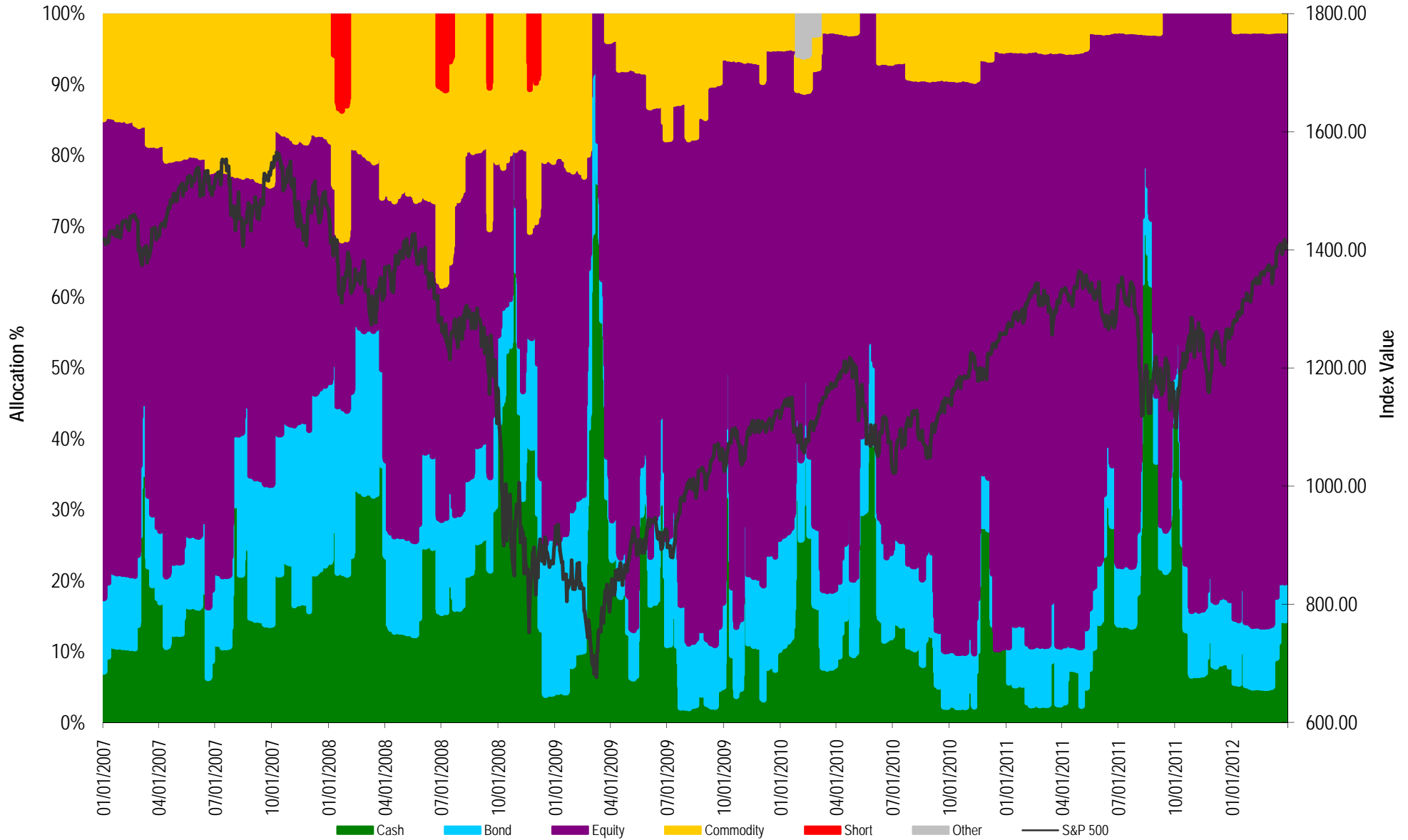


This allocation chart represents the consolidated holdings of all managed client accounts included in the composite for the indicated portfolio on each date shown. The length of each color segment of a bar on the chart represents the percentage of the portfolio allocated to its corresponding asset type on that day. All the color segments (asset types) add up to the 100% allocation of the portfolio each day. The chart illustrates dynamic and responsive nature of the WBI portfolio process by showing the changing allocation mix over time as market conditions change. Market changes are represented by the overlay of a common index. Index values have been retrieved from Thomson Baseline. The index used is for reference only, and may not be indicative of the composition or performance characteristics of the portfolio shown. Additional information regarding the portfolio can be found in the portfolio's Fact Sheet which is available upon request. Investors should consult with their financial professional to determine the WBI portfolio that is most suitable for their individual needs.

ETF Plus Composite

Daily Allocation by Asset Type

01/01/2007 to 03/30/2012



This allocation chart represents the consolidated holdings of all managed client accounts included in the composite for the indicated portfolio on each date shown. The length of each color segment of a bar on the chart represents the percentage of the portfolio allocated to its corresponding asset type on that day. All the color segments (asset types) add up to the 100% allocation of the portfolio each day. The chart illustrates dynamic and responsive nature of the WBI portfolio process by showing the changing allocation mix over time as market conditions change. Market changes are represented by the overlay of a common index. Index values have been retrieved from Thomson Baseline. The index used is for reference only, and may not be indicative of the composition or performance characteristics of the portfolio shown. Additional information regarding the portfolio can be found in the portfolio's Fact Sheet which is available upon request. Investors should consult with their financial professional to determine the WBI portfolio that is most suitable for their individual needs.